



BACK TO A NEW LIFE

# The Trevira CS take-back program





# Contents

---

- **BACK TO A NEW LIFE**  
The Trevira CS take-back program: in 6 steps to re-use
- **STEP 1**  
Check on preconditions for participation in the take-back program
- **STEP 2**  
Compilation of shipping information
- **STEP 3**  
Approval by Trevira CS Trademark Service
- **STEP 4**  
Shipment to recycling partner ALTEX Textil-Recycling GmbH & Co. KG
- **STEP 5**  
Manufacture of torn fibers
- **STEP 6**  
Manufacture of nonwovens for soundproofing, insulation, etc.

## The Trevira CS take-back program

- Used Trevira CS fabrics can be returned and recycled as part of the Trevira CS take-back program. This applies to the following textiles:

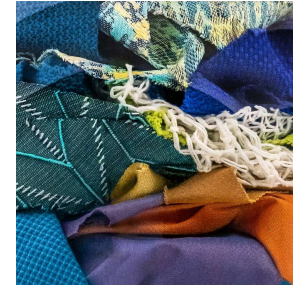
### **Pre-consumer**

- unsold remnants, discontinued items, offcuts, defective goods, etc.

### **Post-consumer**

- textiles from the market that have come to the end of their useful life

- Trevira CS fabrics are collected at the recycling company ALTEX Textil-Recycling GmbH & Co. KG and undergo a mechanical recycling process. The final products are nonwovens, which are used in various sectors for insulation and soundproofing.
- This approach helps to avoid waste and conserve resources.







STEP 1  
**Check on  
preconditions**

# PRECONDITIONS FOR PARTICIPATION IN THE TREVIRA CS TAKE-BACK PROGRAM

---



## 1. Identification of the Trevira CS fabrics

- The take-back system offered is a program for Trevira CS fabrics only (i. e. Trevira CS, Trevira CS flex, Trevira CS eco). After mechanical recycling, these can possibly be reprocessed into flame-retardant products. It must therefore be ensured that only Trevira CS fabrics are used in the recycling process.
- Proof that the fabric in question was manufactured from flame retardant Trevira® fibers and filaments or the products of the further processing stages (spinners, texturizers, etc.) is provided by presenting the Trevira CS trademark approval. This confirms that the fabric has passed the fire test indicated in the trademark conditions and has been approved for the Trevira CS trademark.
- If no trademark approval is available, a chemical analysis can be used to verify whether the material is a Trevira CS fabric. This procedure must be agreed upon with the Trevira CS Trademark Service. Please contact: [petra.kruecken@de.indorama.net](mailto:petra.kruecken@de.indorama.net); [anke.vollenbroeker@de.indorama.net](mailto:anke.vollenbroeker@de.indorama.net).

# PRECONDITIONS FOR PARTICIPATION IN THE TREVIRA CS TAKE-BACK PROGRAM

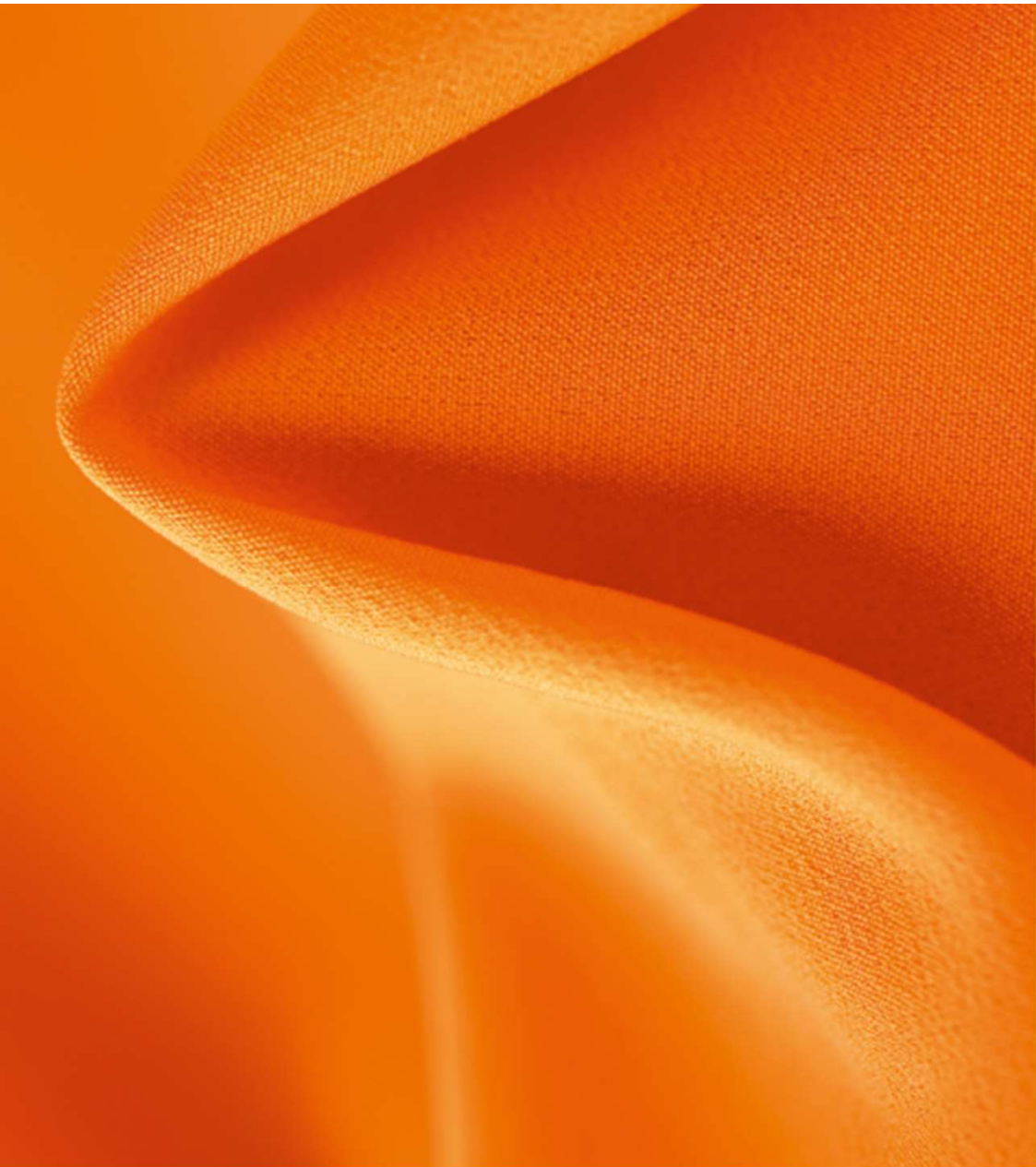
---



## 2. Requirements for the condition of the textiles

To qualify for the take-back project, Trevira CS textiles must meet the following requirements:

- Fabrics must be dry and free of coarse impurities or heavy coatings.
- Fabrics must be free of contamination (blood, chemicals, etc.).
- Admitted are:
  - stiffened fabrics (interior solar shading) in which low-melt fibers or filaments have been processed or which have been stiffened using a finish.
  - fabrics with a light aluminum finish.
- Fabrics with metal or plastic parts attached (e. g. zippers) may also be suitable to be recycled. This must be agreed upon with Trevira CS Trademark Service.
- If there is any uncertainty about the usability of the article in the Trevira CS take-back program, please contact: [petra.kruecken@de.indorama.net](mailto:petra.kruecken@de.indorama.net); [anke.vollenbroecker@de.indorama.net](mailto:anke.vollenbroecker@de.indorama.net).



STEP 2

# Compilation of shipping information



# COMPILATION OF SHIPPING INFORMATION

## Entry of the required information on the article into the shipping list

- Trevira CS Trademark Service provides a form (shipping list) in which all relevant information about the article is entered.
- Depending on their condition, the incoming fabrics might be fed to different recycling plants. This is why the form is available for 2 categories of textiles.  
 Category A: non-critical fabrics without special coatings and adhesions  
 Category B: critical fabrics, i. e. fabrics with special coatings or adhesions of metal or plastic parts



### Trevira CS Take-Back Program

Shipping List for uncritical items / Category A

Date:						
Article	Trevira CS Trademark Approval Number	Weight / kg	Please tick		To be filled in by Trevira	
			Delivery on rolls	Del. in card-board box	Approved	Not approved



### Trevira CS Take-Back Program

Shipping list for critical items / Category B

Date:										
Article	Trevira CS Trademark Approval Number	Weight / kg	Delivery on rolls	Please tick		Finish / Coating	Contaminations	Contains metal or plastic adhesions/parts	To be filled in by Trevira	
				Del. in card-board box	Del. in card-board box	Please explain, e. g. stiffened, aluminized	Please explain	Please explain	Approved	Not approved

- Please enter the article information in the appropriate list and send it for inspection to: [petra.kruecken@de.indorama.net](mailto:petra.kruecken@de.indorama.net); [anke.vollenbroecker@de.indorama.net](mailto:anke.vollenbroecker@de.indorama.net)





STEP 3

**Approval by  
Trevira CS  
Trademark Service**

# APPROVAL OF SHIPPING INFORMATION BY TREVIRA CS TRADEMARK SERVICE

---



## Inspection and Approval of the shipping information

- Trevira CS Trademark Service
  - checks whether trademark approval is available
  - clarifies discrepancies if necessary
  - approves or rejects the article
- The shipping list is sent back to the customer.
- The customer sends the list to the recycling partner to announce the delivery:  
k.stienemann@altex.de
- The customer sends a copy to the Trevira CS Trademark Service  
(petra.kruecken@de.indorama.net; anke.vollenbroeker@de.indorama.net) to share the information that the shipment has been notified to the recycling partner.





STEP 4

**Shipment to  
recycling partner**

# SHIPMENT OF THE TREVIRA CS FABRICS TO THE RECYCLING PARTNER



## Shipment to ALTEX Textil-Recycling GmbH & Co. KG

- The approved Trevira CS articles are sent to the following address:

ALTEX Textil-Recycling GmbH & Co. KG  
„Trevira CS“  
Gronauer Str. 105  
48599 Gronau-Epe  
Germany



Phone: +49 2565 9345 32

Contact: Karsten Stienemann  
k.stienemann@altex.de  
www.altex.de

- Please enclose the approved shipping list.



# SHIPMENT OF THE TREVIRA CS FABRICS TO THE RECYCLING PARTNER

---



## Payment for fabrics and support for transportation costs

- The Trevira CS fabric quantities to be recycled are remunerated per kilogram. Please contact ALTEX directly (k.stienemann@altex.de) for price and payment procedure.
- Trevira CS Club customers with Gold or Silver status receive support for the transport costs incurred as part of the Club Services. Please send us the relevant shipping invoice and shipping list for consideration.



**STEP 5**

# **Manufacture of torn fibers**



## MANUFACTURE OF TORN FIBERS

---

### Sorting of Trevira CS fabrics and production of torn fibers

- At ALTEX, incoming fabrics are collected, sorted according to their condition (category A or B) and fed to the appropriate recycling plant.
- Here they are mechanically recycled and shredded into torn fibers.





STEP 6

# Manufacture of nonwovens



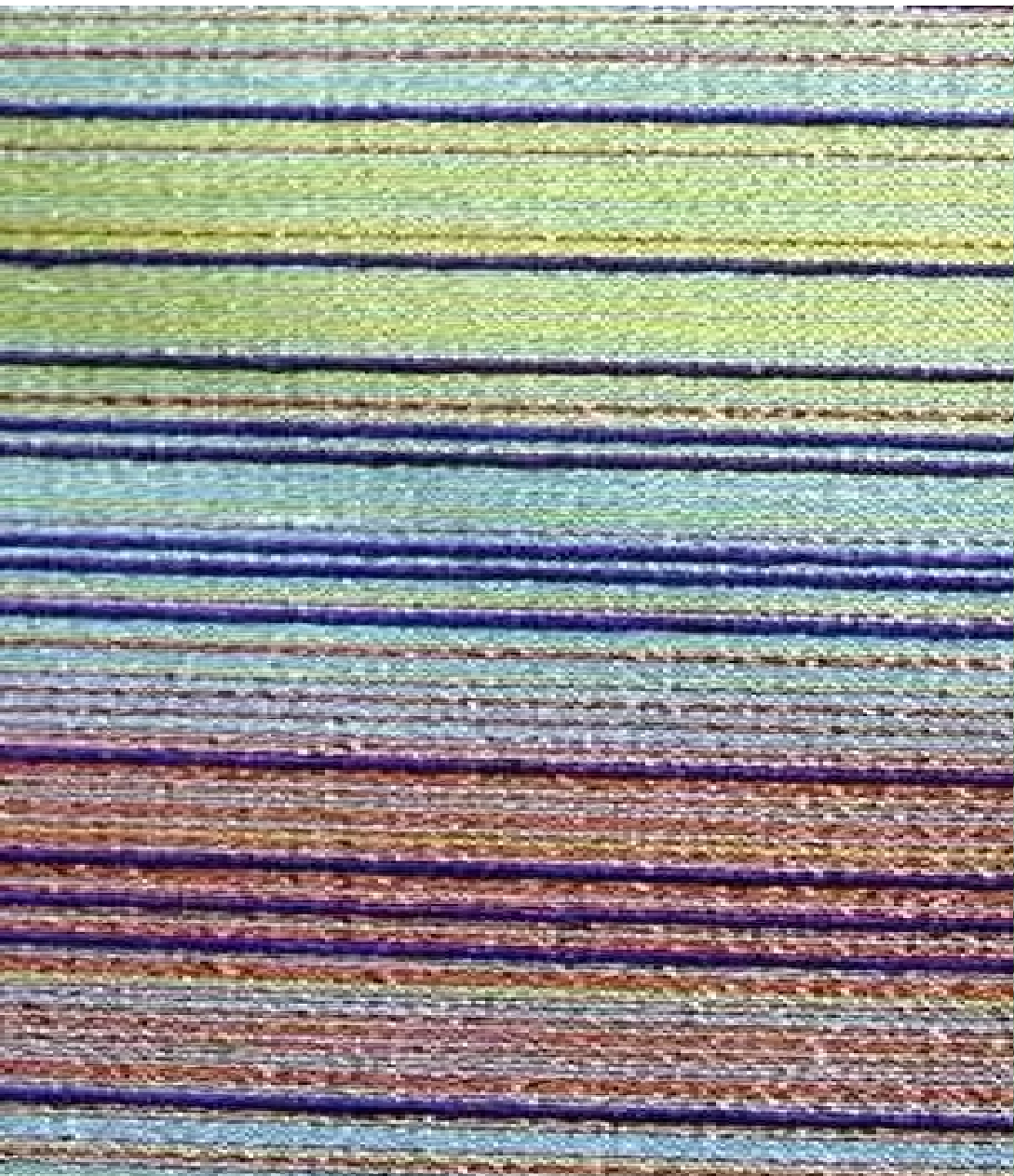


## MANUFACTURE OF NONWOVENS

---

### Processing of torn fibers into nonwovens

- In a further processing step, the torn fibers are converted into nonwovens.
- Depending on the specification and end application, new fibers and/or low-melt fibers are added.
- The resulting nonwovens can be used in a variety of ways - e. g. for insulation and as soundproofing panels.
- Of particular interest is their use as acoustic panels, for example in the form of sound-absorbing wall coverings, free-standing partitions, ceiling suspensions or decorative objects. In many cases, these are covered with Trevira CS fabrics, so that an attractive new product can be created here, to which waste lends its sound-absorbing function.



**THANK YOU**  
for your interest  
in the Trevira CS take-back program